



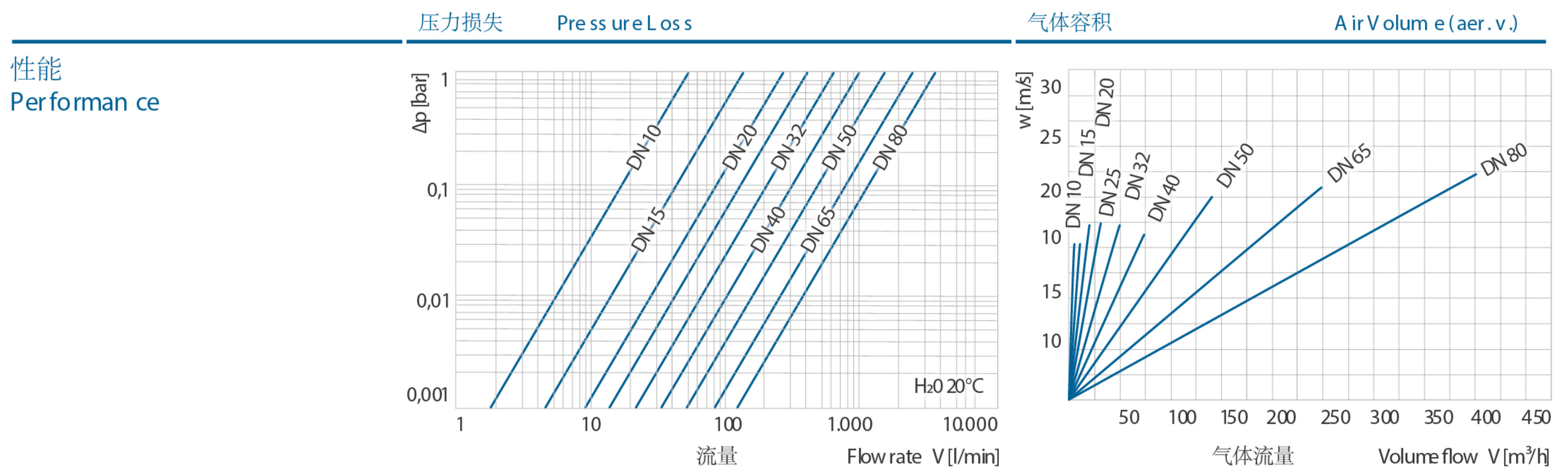
底阀和排气阀 Foot valve, aerating valve

S4

- 标准化模块系列
- 两种锥型设计
适应不同排气工况
- 底阀配有PP滤网
- Modular series concept
- Two coned design options for
that would differ in aerating valve
applications
- PP strainer for foot valve

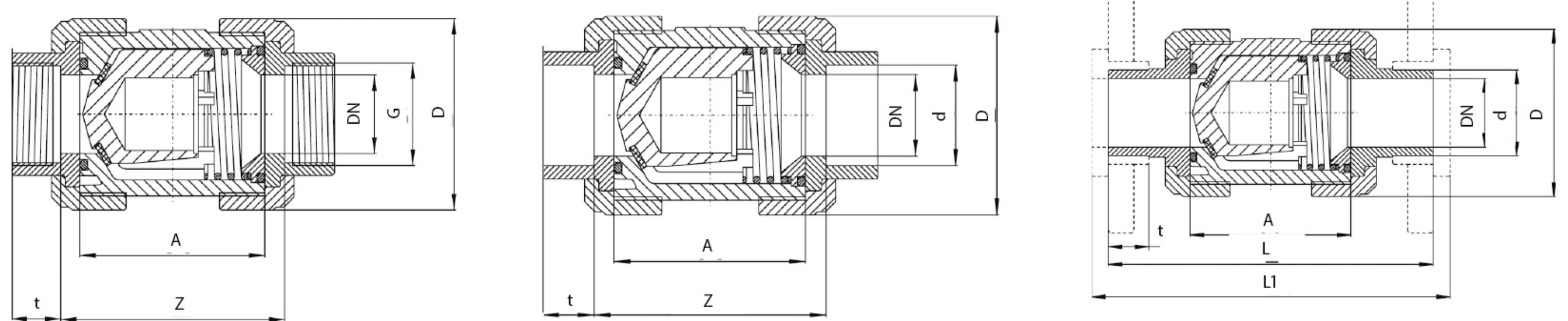


		密封	Seals	尺寸	Dimensions	PN	连接方式	Connections
材料 Models		PVC-U	EPDM, FPM	DN10/d16 ^{3/8} "-DN65/d75/2 ^{1/2} " DN80/d90/3" DN80/d110/4"		16 10 6	承插粘结 外插粘结 螺纹连接 法兰连接 PE承插焊接 PE对焊连接	solvent cement socket solvent spigot threaded socket flange fusion socket PE fusion spigot PE
		PP	EPDM, FPM	DN10/d16 ^{3/8} "-DN50/d63/2" DN65/d75/2 ^{1/2} " DN80/d90/3"-DN80/d110/4"		10 8 6	承插焊接 对焊连接 螺纹连接 法兰连接	fusion socket fusion spigot threaded socket flange



外型尺寸 Dimensions	d	DN	G	L	L1	A	D	Z*	t*
	16	10	3/8"	114	120	62	53	67,5-71	14,5-16,5
	20	15	1/2"	124	130	62	53	67,5-71	14,5-16,5
	25	20	3/4"	144	150	70	63	76-79	17-19,5
	32	25	1"	154	160	74	70	81-84	19,5-22,5
	40	32	1 1/4"	174	180	84	85	90-96	22-26,5
	50	40	1 1/2"	194	200	95	101	104-114	25-31,5
	63	50	2"	224	230	109	121,5	121-134	29-38,5
	75	65	2 1/2"	284	290	137	155	148-162	34,5-45
	90	80	3"	300	310	163	188	183-211	38,5-55,5
	110	80	4"	340	350	163	188	176-207	44-64

*根据材质
*depend on material



永熙机电